

# Redington Beach Newsletter

March 2012



Redington Beach Town Hall, 105 164th Ave, Redington Beach, FL 33708

HOURS: Monday to Friday 8:00 am to 4:00 pm

[www.townofredingtonbeach.com](http://www.townofredingtonbeach.com)

Phone: 727-391-3875

Fax: 727-397-6911

## *A Message from the Mayor:*

*To All Redington Beach Residents: Redington Beach is sound financially according to our latest independent auditors report for Fiscal Year 2010/2011.*

*We continue to improve our infrastructure. The road resurfacing was completed and we have budgeted funds to replace the north side of the 161st Avenue Causeway seawall. Our storm drains are in relatively good shape, but the Federal and State Government's are increasing the monitoring of what runs off into our coastal waters.*

*The Florida Department of Transportation is proposing some safe haven pedestrian improvement in the center lane of Gulf Boulevard and we are working with them to address both pedestrian and vehicular traffic concerns.*

*I hope you all have a pleasant spring*

*Nick Simons, Mayor*

## DID YOU KNOW?

Did you know each year our nation generates enough garbage to fill a convoy of trash trucks that would reach half way to the moon? And it keeps growing longer every year. For many years, most of the trash and garbage have gone to the landfills. Now many of these landfills are almost full. This is causing landfill costs to soar, forcing many of our communities to raise fees or taxes to pay the additional costs. Landfills are no longer an easy answer.

In some communities, the waste goes to an incinerator that burns it and removes energy. These incinerators reduce the volume of waste, but the landfills are still needed to bury the ash that the burning produces.

Both incinerators and landfills are expensive and can take a long time to locate and build. Because there isn't just one simple remedy for our trash problems, we need to consider a combination of solutions to manage it. Recycling is one alternative. Try it and you can make a difference. Recycling bins are available at town hall free of charge.

### Where Does it Go?

67% Landfill

17% Recycled

16% Incinerated

## PUBLIC WORKS NEWS

By Mark A. Davis

### Town Park:

- The teeter totter at Town Park has been repaired and is fully functional once again.
- The children's new sand digger has been lowered. Requests were made that some of the smaller children were not able to reach the seat.
- The chain link fence surrounding Town Park has been replaced and repaired in areas of need. The park has three entrance gates for access and should eliminate the need for climbing over as this is what causes damage.
- The original Town Park playground will soon be getting a new face lift. The playground equipment is scheduled to be painted and the sand replenished.

### Storm Drainage:

- The cleaning of storm drains is an ongoing process, however presently we are engaged in jetting and vacuuming drain lines and catch basins with large vector trucks in anticipation of the upcoming rainy season. The reason its done this time of year and as early in the day as possible is due to the fact the tides dictate when it is possible to have access. Only during the winter months is when the tides become extremely low. During these low tides, we are able to get the drain pipes free of most accumulated sand.

### Parks & Rec Board

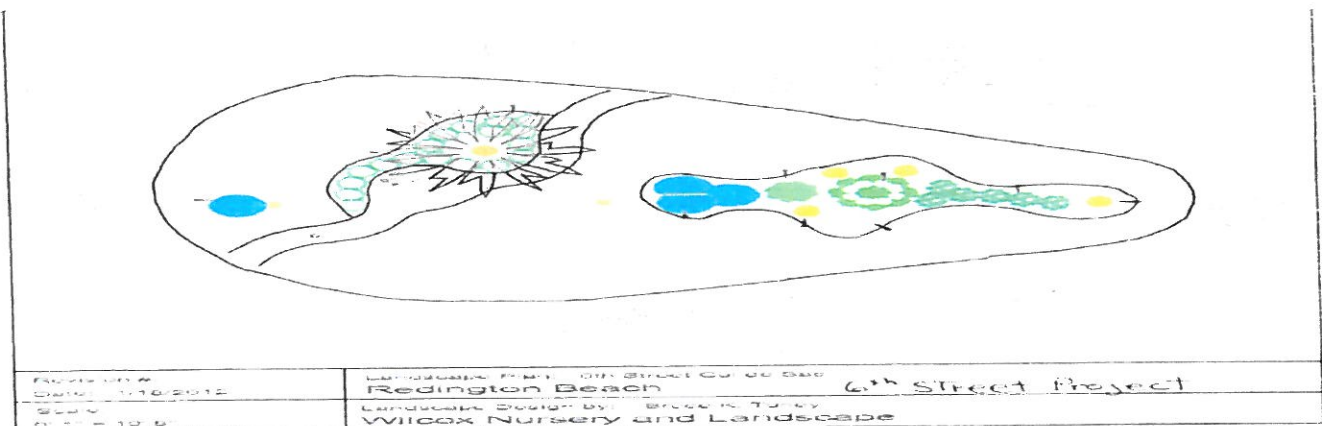
Your Parks and Recreation Board is busy as usual. They are currently involved in designing the cul de sac on 6th Street with new landscaping as part of their ongoing beautification program. (See diagram below.)

If anyone would like to donate a park bench in memory of a loved one, please contact me at Town Hall. We are in need of benches at three locations, the causeway, 157th Beach park, and the 6th Street Cul de sac. By donating a park bench you can memorialize a loved one, add to the beautification of your community and provide a place to take a rest and enjoy the fresh air. (See page 7 for order form)

All oak trees on town property have been thinned recently by certified arborists. By selectively removing branches, these trees now have the opportunity to grow strong and beautiful for many years. They will also be able to withstand our tropical storms much better now, with less damage occurring in high winds.

The Town Park will have a new drinking fountain soon. The order has been placed and we are just waiting for the arrival. The shelters lighting has also been replaced. Enjoy.

Moon Park, (AKA 157th Ave Beach Park): The forty plus year old bougainvillea has been removed. The old flowering ornamental just became too uncontrollable and was also decaying, making it impossible to keep trimmed. Some of you may remember the beautiful flowers while it was in full bloom, while some of you may remember the large thorns. I sure do.







*From the desk of*  
... **Mark A. Davis**  
DPW Director and Code  
Enforcement Officer

For Code Enforcement Questions,  
contact Mark Davis,  
Code Enforcement  
Officer at town Hall  
727-391-3875.

### *The Code Enforcement Program*

*Code Enforcement Mission Statement: To insure a safe, healthful environment consistent with the community needs and Town codes while striving for voluntary compliance and public awareness.*

*Provides interpretation and enforcement of all town ordinances and policies.*

*Responds to citizen complaints and concerns.*

*Researches and determines nature and severity of violations.*

*Establishes remedial action and time required for code compliance.*

*Maintains records necessary for effective, legal enforcement.*

*Processes code cases, through re-inspections, proper notification, and schedule for code enforcement board hearings.*

*Reviews codes as necessary for revision/amendments in keeping with community needs.*

*Provide town wide surveillance, surveys, and studies to monitor compliance and effectiveness of codes.*

## NEWS BRIEF

There have been some recent changes to the Florida Statute, 316.1951, that pertain to vehicles parked and offered for sale from prohibited locations. Vehicles parked and offered for sale in violation of F.S. 316.1951 are commonly referred to as curb stoned vehicles. One of the changes allows for these vehicles to be immediately towed. More importantly, the Statute now empowers local government compliance officers and code enforcement officers from any local government agency, as well as law enforcement officers, to issue a citation in addition to having the offending vehicle immediately removed. The citation assesses a \$100.00 fine per F.S. 318.18 (21) and fines collected under this subsection are retained by the governing authority that authorized towing of the vehicle. The vehicle cannot be released to its owner by the towing/storage yard until proof is furnished that the \$100.00 fine has been paid to the issuing party.

FYI: Friendly reminders: Utility trailers, RV's, and unlicensed motor vehicles are prohibited from being parked in the open view of the public, in the Town of Redington Beach, per town ordinance. However, a temporary 14 day permit may be obtained, free of charge at the town hall. This is good for a total of 14 days per each 12 month occurrence. You may park such vehicles inside an enclosed carport or garage. Repeat offenders may be issued a citation and have to appear in court at the 49th Street Criminal Complex. To avoid costly fines and a possible misdemeanor infraction, please make arrangements for storage if needed.

Do not place anything into the storm drains. The drains lead directly to the bay. This law is regulated by the U.S. Environmental Protection Agency and is strictly enforced by local, state, and federal authorities and penalties for violations can be severe.

Gulf front properties must prevent any unnatural lighting in their back and side yards during sea turtle nesting season. (May through October) as it causes disorientation by hatchlings which leads to their deaths.

Any disturbance of soil such as excavating, clearing, buildings, etc., require the erection of sediment/erosion control devices such as silt fences or barriers preventing any dirt from entering the streets, curbs, and drains. Failure to comply is a violation of the federal NPDES laws and penalties can be severe.

Building permits must be posted as to be seen from the street.

Continued on Page 6

**NPDES: National Pollution Discharge Elimination System****By: Mark A. Davis**

All storm drains in the Town flow directly into Boca Ciega Bay. It is a crime to dispose or to dump anything other than clean water into the Town's drainage system. If you are aware of any illicit discharges into the storm sewers, please contact Town Hall or Code Enforcement at 727.391.3875. We are all custodians of our environment, let's do our part. Please do not contaminate our bay and surrounding waters of the Gulf of Mexico by putting chemicals, waste water, or anything else other than rain water into any of the storm drains. Illicit dumping affects marine life negatively, which in turn has a great impact on us humans as well. Any suspicious activity should be directed to Pinellas County Sheriff's office, Pinellas County Environmental Department or Redington Beach Code Enforcement: For Hazardous Waste Disposal information, contact Pinellas County Utilities, Household Electronics & Chemical Collection Center at 2990 10th Ave N, St. Petersburg, FL 33716. Phone: 727-464-7565, Fax: 727-464-7713. Also there is a mobile collection of household/business electronics and chemical collection events throughout the year at various sights in Pinellas County. If you would like more information on these "mobile" events, please contact town hall and they can give you a list of dates, times, and locations.

To report illegal disposal of hazardous materials or chemicals, call Florida Department of Environmental Protection at 813-744-6100, Tampa, 941-332-6975, For Meyers or 407-894-7555, Orlando. For information on local sites, for biomedical waste items, call your local county health department. For information on local oil recycling sites, call 1-800-741-4337. For information on safe handling or disposal of pesticides, call your local county cooperative extension service, Florida Pest Control Association at 1-800-426-4829. Florida Bureau of Entomology and Pest Control at 1-904-727-6590, or the National Pesticide Telecommunications Network at 1-800-858-7378.

Due to Federal regulations, swales have been installed throughout the Town of Redington Beach. Since we discharge storm waters directly into a federal body of water (Boca Ciega Bay) the Town is required to implement best management practices in regards to reducing surface contaminants and pollution to our drinking water supply in general. Please familiarize yourself with the attached information on swales. Remember, our efforts to reduce pollution today, affects the world in which our children will live.

Each quarterly newsletter you receive contains helpful hints and educational information that I feel will help keep you as residents, or our unique community well informed and up to date with the ever changing federal laws and regulations that we as a municipality are required to comply with. I hope everyone will take a few moments of your time to familiarize yourselves with these helpful facts.

The town is required yearly to obtain a permit from the State of Florida to further its efforts to reduce the amount of pollutants entering the public waterways and endangering the environment. To work towards that goal, the Town is requesting your help in the following ways:

Please don't dump or throw anything, including concrete, grass clippings, etc., into the gutters, swales on Intracoastal Waterways. These areas must be free of debris to function as they have been designed.

It is especially important that no one dispose of or dumps or causes the disposal of any hazardous waste within the municipal limits of the town. Hazardous waste is defined as any solid waste, or combination of solid wastes, which because of its quality, concentration, or physical, chemical, or infectious characteristics may cause or significantly contribute to an increase in mortality or an increase in serious irreversible or incapacitating reversible illness or pose a substantial present or potential hazard to human health or the environment when improperly transported, disposed of, stored treated, or otherwise managed. These materials can be disposed of in conjunction with established amnesty days of the county and the state, and at properly authorized locations or sites.

If you observe any illegal disposition of materials into drainage facilities that could obstruct the flow of Storm water or if you see dumping of hazardous waste or debris in gutters, manholes, swales, or the intra-coastal waterways, please notify the public works department at 727-391-3875.

Also, if you are contemplating construction, please check with the Pinellas County Building Department before you build onto, alter, re-grade or fill you property. A permit may be needed to ensure projects do not cause drainage problems on other properties, increase chemical pollutants, (pesticides, fertilizers, etc.) entering the waterways.

Continued on Next Page



## NPDES Continued

Find plants and gardening methods that require fewer fertilizers, herbicides, and pesticides for your landscaping plan in order to reduce the possibility of chemicals polluting the bay.

### STORM WATER RUNOFF

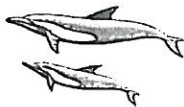
- Direct downspouts and gutters to drain onto the lawn, plant beds, or containment areas.
- Plant groundcovers or use mulch on thinly vegetated areas to decrease erosion.
- Use mulch, bricks, flagstones, gravel, or other porous surfaces on walkways, patios, or drives.
- Collect and use rainwater to irrigate plants.
- Create swales or terracing to catch and filter storm water.
- Pick up after pets to reduce bacterial and nutrient pollution in storm drain systems.
- Clean up oil spills and leaks using cat litter on driveways.
- Sweep grass clippings, fertilizers, and soil from driveway onto the lawn. Remove trash from street gutters.

### ON THE WATERFRONT:

- Remove invasive exotic aquatic plants by cutting, pulling, or raking. Remove dead plant material from water after using herbicides to reduce pollution.
- Protect your mangroves. All pruning must be in compliance with existing laws.
- Establish a border of low maintenance plants between your lawn and shoreline/seawall to absorb nutrients and to provide wildlife habitat.
- Establish a 10 to 30 foot "no fertilizer" zone along your shoreline.
- Where feasible, plant native vegetation in the littoral zone in front of your seawall or along shoreline.
- Decrease wave action and increase habitat by placing clean, native limestone rock in front of your seawall.

You can make a positive environmental impact. If you or your group would like to adopt a shore, gloves and trash bags will be provided. Drop off locations will be assigned where to leave the removed litter so that it may be picked up and disposed of.

**Please Don't Pour**



**That's Our  
Front Door**

**NPDES: NATIONAL POLLUTION DISCHARGE  
ELIMINATION SYSTEM**

**"ADOPT-A-SHORE" Registration Form**

Volunteer's Name: \_\_\_\_\_  
Address: \_\_\_\_\_  
Home Phone: \_\_\_\_\_  
Cell Phone: \_\_\_\_\_  
E-mail Address: \_\_\_\_\_

**HELP KEEP YOUR COMMUNITY BEAUTIFUL**

*Adopt  
a  
Shore*



**Code Enforcement Continued from Page 3**

Short term rentals (less than 181 days) is NOT permitted in Redington Beach.

House Address numbers are required to be posted on the mailbox or house so that emergency personnel can easily see them.

Pods have a 7 day maximum length of stay.

Utility trailers in open view, outside an enclosed carport or garage are prohibited.

Commercial vehicles stored on residential properties are prohibited.

Solid Waste Ordinance: Section (d): Placement: Garbage cans are required to be kept in places easily accessible to the town inspector and to the employees of the garbage collector, but not in such places or under such conditions as to cause an unnecessary or unreasonable offense to sightliness, cleanliness, or safety or other unsanitary condition. They shall not be kept upon neighboring property not in the ownership or tenancy of the person by whom the garbage was accumulated, whether such neighboring property be vacant or improved, without the written consent of the person having the right to possession and use of the property. Garbage cans shall be placed on the alley of all improved land served by an alley, or at such other places as shall be designated by the town if alley pickup is non-existing or impractical. It shall be unlawful to store or place garbage containers on any public right of way or in the front yard of any property in view of the public.

The Town of Redington Beach Department of Code Enforcement is a pro active department. We also accept and follow up on resident complaints.

Although the majority of violations are settled by receiving just a courtesy notice, occasionally the Town's codes and ordinances are challenged by individuals who choose not to cooperate. In such cases, a notice to appear will be issued. Although most ordinance violation are classified as misdemeanors, a Notice to Appear is an actual criminal offence and is considered an arrest that consists of a mandatory court appearance in which failure to appear will result in a warrant for arrest being issued by the court.

Town ordinances can be reviewed on line, at the Madeira Beach Library, and at the Town Hall, but may not be taken off the premises. If you are unsure of a particular ordinance, please feel free to give me a call. I will do my best to give you an explanation that you understand.

Neighbor disputes can sometimes get very ugly. Its always best to try talking to each other before getting Code Enforcement involved. You just may be surprised how receptive a neighbor can be to the issue. Give it a try.

Occasionally I am confronted with a disgruntled resident who received a parking ticket at the Town's beach park. Every resident of the town, including their guests or visitors can get a parking pass for their vehicles. All you have to do is stop by Town Hall with proof of residency such as a car registration, utility bill, etc. There is no charge. This is the only way we're able to make sure you have a place to park your car at the beach. Parking there is for you, so please make time to stop in to pick up your free parking pass. It only takes a few minutes.

While most town residents are aware of some town codes, most are not familiar with all of them. Please keep in mind that code violations are addressed with a courtesy notice at first, and are just that, a courtesy call to inform and educate of a code violation that does exist. Most of these situations can be very simply taken care of within three days of the notice. If not addressed within this time frame, a second notice is mailed and is an actual legal notice. This notice will state a time frame in which compliance must be met. There are instances where an existing violation cannot be remedied within this time frame. If this is the case, give me a call. I will try my best to work with you. Ignoring a legal notice is not a solution. The town's ordinances have been adopted so that the Town of Redington Beach is a desirable community to live in and that it remains that way.

If you should have any questions or concerns about code enforcement, ordinances of the town, violations, procedures, etc., please feel free to give me a call or even stop by my office and I will be happy to answer your concerns.



***Staying Safe When Walking & Biking***

Teach, practice, and remind children to:

- Always wear a helmet that is properly fitted.
- Whenever possible, ride with an adult or responsible older student.
- Always obey all traffic signs and signals.
- Ride on the right side of the road or trail in a single file.
- Ride in the same direction as other vehicles.
- Go straight across railroad tracks.
- Always use proper hand signals when turning or stopping.
- Yield to Pedestrians and alert them with a bicycle bell or your voice when passing.

Teach, practice, and remind children to:

- Walk with an adult or responsible older child at all times.
- Children under 10 years old should cross the street only with an adult.
- Walk on the sidewalk if there is one.
- Walk facing the traffic, as far from the road/traffic as possible, if no sidewalk is available.
- Use traffic signals and marked crosswalks if available.
- Stop at the curb or edge of the road and **LOOK** left, right, and left for traffic before crossing.
- Walk; don't run.
- Give drivers time to see you before crossing the street.
- Keep **LOOKING** for cars while you are crossing.
- Wear white clothing or reflectors when walking in the dark or low light.

**Town of Redington Beach Park Benches**

Looking for a way to memorialize a loved one? To honor a family member, group, or to commemorate a special event? Why not choose a beautiful park bench for your lasting tribute? Benches are made of recycled plastic lumber and will not rot or rust and never need repainting. They are gray in color and include stainless steel hardware. (Plaque is not included in price.)

Option # 1      6' Park bench with Back: \$515.00 (approximate)

Option # 2      4' Flat bench (no back) \$320.00 (approximate)

The three sites that have been identified to display these benches are:

- 6th Street Cul de Sac
- 157th Beach Park
- 161st Avenue Causeway

Please return your check and this form to:

Redington Beach Town Hall  
105 164th Avenue  
Redington Beach, FL 33708

Name: \_\_\_\_\_

Address: \_\_\_\_\_

Phone: \_\_\_\_\_

### **COMMUNITY RATING SYSTEM (CRS)**

#### **WHAT EVERY TOWN RESIDENT SHOULD KNOW REGARDING FLOOD SAFETY, FLOOD INSURANCE RATES, FLOOD INSURANCE AND FIRE SAFETY**

**FLOOD SAFETY:** Local flooding could occur in the Town, as a result of storms and during high tides. Flooding is dangerous and can happen within a short period of time. Even though water appears to be moving slowly, a flood 6" deep moving at 3 ft./second can knock people off their feet, a flood 2 feet deep moving at the same velocity can float a car off the road. The message is clear; DO NOT attempt to walk or drive in flood conditions.

**PROPERTY PROTECTION MEASURES:** Protecting a property from flood damage includes retrofitting, grading a yard, correcting local drainage problems and such emergency measures as moving furniture and sand bagging. In times of hurricanes and/or tropical storms measures to protect against high winds, one should consider installing storm shutters and reinforced garage doors.

**FLOOD INSURANCE RATE MAP (FIRM):** The FIRM is a map published by the Federal Emergency Management Agency that is used by the County Building Department, realtors, lending institutions, architects, engineers, and surveyors to determine in which Flood Zone a particular property is located and the base flood elevation (BFE). This information is useful to engineers and architects in building design and insurance underwriters in rating flood insurance policies. Lending institutions are now legally required to mandate that property owners with mortgages must carry flood insurance on properties located in the flood zone. Since Redington Beach is a barrier island, the entire Town is designated a Special Flood Hazard Area and is located in either a VE or AE Zone. The town has several Base Flood Elevation (BFE) heights. The BFE is the height above mean sea level to which the lowest structural member/floor support of a new structure must be elevated to survive flooding so severe that its height is expected no more often than once in a hundred years. Information on the flood zone or the base flood elevation for your property can be obtained by calling the Redington Beach Town Hall at 727-391-3875 and/or checking the town website at [www.townofredingtonbeach.com](http://www.townofredingtonbeach.com).

**ELEVATION CERTIFICATES:** All new construction or substantial improvement requires a surveyor's elevation certificate to document the height of the floor, structure, and equipment, as well as breakaway walls, or hydrostatic relief vents required in enclosures for garage storage below the BFE. The town maintains a file of these certificates, and can provide copies to anyone as per availability.

It should be noted that official file and elevation certificate information is what is used to determine insurance rates, or if enclosures or additions to living space have been made below flood level. These illegal enclosures or changes will not be covered by insurance; only permitted expansions documented as meeting codes will be covered. Elevation Certificate copies are on the Town web page.

**FLOOD INSURANCE:** The Town of Redington Beach participates in the National Flood Insurance Program (NFIP) and the Community Rating System (CRS) and currently has a rating of 8 with 10 being the lowest and 1 being the highest rating. Each rating below 10 gains property owners in Redington Beach a 5 % reduction in their flood insurance premiums. Since Redington Beach is currently at 8, residents enjoy a 10% reduction. If you haven't already done so, you need to advise your insurance agent that Redington Beach has a NFIP/CRS rating of 8 at this time, so you receive the proper discount. Insurance writers should know this, but it is best to check. Remember normal homeowners insurance does not cover flood damage. Also, you must have flood insurance to participate in some grant programs.

**WHAT YOU CAN DO:** The Town is graded by NFIP/CRS and awarded points for various activities ranging from adopting flood and storm drainage ordinances, educational projects, such as newsletters, for which we are allowed points. Some actions such as a mitigative retrofit and elevation of structures may qualify for grant monies.

*Continued on next page*



Unfortunately, your elected officials and town staff cannot do it all. To a large extent, it depends on the cooperation and assistance of residents and property owners to make it work. Here are some ways you can help: keep erosion silt and trash out of drains—drains flow to the intracoastal waters and affect beaches.

As a participant in the NFIP and NPDES, the town has adopted ordinances on building construction, storm water drainage, filling, grading, and excavation. If you see any construction or excavating done without a permit posted, contact the building department.

There are numerous storm water inlets on public and private properties in town. The Public Works Department inspects these inlets on a biannual basis to determine if they are being maintained. If you see anyone dumping trash, lawn clippings, etc. into these inlets contact the building department. If seen at night or weekends, contact the police department at 727-582-6200.

**THE TOWN'S PART:** Your elected officials, in an ongoing effort to keep the town safe from the dangers of flooding, have authorized or implemented the following: Redington Beach contracts with Pinellas County building Department. They stand ready to advise property owners, architects, and contractors regarding acceptable methods of flood proofing of proposed new construction or existing structures, and to assist with applications for grant monies (see below). It also has an extensive library on these subjects free of charge. In the event of a storm, flood proofing can be accomplished by sand bagging door openings, etc. (not hydrostatic relief) or building a berm around your property to protect it from flooding.

The Town Commission has named Mark Davis, Public Works Director as the Town's Emergency Management Coordinator and has adopted the Pinellas County Hurricane Evacuation Implementation Guide. In the event of a storm, some citizens are advised to stay tuned to WARM FM 94.9 as a primary source of storm data and WRBQ FM 104.7 as a secondary source. In the event of a hurricane, the Police Department receives regular updates from Pinellas County Emergency Management.

The Town adopted a Flood Management Plan, including requirements for the FEMA 50% Rule. This states that, if a property is damaged more than 50% or if an owner wants to make substantial improvements, which exceed 50% of the fair market value of the structure only (not including the land), the owner will be required to bring the building into compliance with NFIP regulations and town ordinance requirements for new construction. Literature on this is FREE of charge from the Town Hall and the Gulf Beaches Library in Madeira Beach, as well as online at the town's web site.

**AVAILABLE GRANT PROGRAMS:** Include: FMA (Flood Mitigation Assistance) RFC (Repetitive Flood Claims) SRL (Severe Repetitive Loss). Other information on retrofitting existing homes along with the above program information is available at Town Hall. For residents considering applying for grants it will be necessary to have the following items to determine eligibility and funding:

- Current Appraisal
- Current survey-site approval
- Current elevation certificate
- Recent estimate of construction costs to perform mitigation retrofits.

*Continued on next Page*

*CRS Continued*

The Town can help once all of the information is gathered by electronically submitting the application.

FREE sand bags are available at Town Hall, each resident is allocated 20 bags. FREE of charge, FIRM information, hazardous recovery information and brochures are available at Town Hall and the Gulf Beaches Library in Madeira Beach. Check out the Town's web site for links to FEMA, STATE & COUNTY, AND EMERGENCY RESPONDERS.

**BE ALERT FOR GAS LEAKS:** Use a flashlight to inspect for damage. Don't smoke or use candles, lanterns, or open flames unless you know the gas has been turned off and the area has been ventilated. Before evacuating, make sure the gas has been turned off.

### PINELLAS COUNTY'S FERTILIZER ORDINANCE

Local waters are experiencing a decline in water quality due to excess nitrogen and phosphorous. This prompts concerns about our marine life, our lakes and beaches and our economy.

Fertilizer is one nutrient source that can be controlled with your help. The use of fertilizers in Pinellas County is restricted in accordance with the Landscape Maintenance and Fertilizer Use and Application ordinance (Pinellas County Code Article XIII, Chapter 58)

**October 1 to May 31 of each year:** All lawn and landscape fertilizers containing nitrogen must have at least 50% of the nitrogen as slow-release.

**From June 1 to September 30th of each year:** The sale and use of lawn and landscape fertilizers containing nitrogen or phosphorous is prohibited in Pinellas County. Use iron and other micronutrient products to green up turf and plants.

Visit [www.tbep.org](http://www.tbep.org) to learn more about landscape practices that help prevent water pollution.

**Weather & Seasonal Restrictions:** No nitrogen or phosphorus may be applied to turf grass or landscape FROM JUNE 1 THROUGH SEPTEMBER 30, or any time of the year if the National Weather Service has issued any of the following advisories: severe thunderstorm warning or watch, flood warning or watch, tropical storm warning or watch, hurricane warning or watch, or if rain is greater than 2 inches is forecast within 24 hours.

**Fertilizer Content & Application Rate:** Apply fertilizers at the recommended rate per Florida Friendly Best Management Practices for the Protection of Water Resources by the Green Industry. Use no more than four pounds of nitrogen per 1,000 sq. ft. per year. Do not apply phosphorus unless a phosphorus deficiency is documented by a soil test. No nitrogen may be applied to new turf grass or new plantings for 30 days. Granular fertilizers containing nitrogen must be 50% or more slow-release nitrogen and up to 1 pound of nitrogen per 1,000 sq. ft. can be applied per application. Liquid fertilizers containing water-soluble nitrogen applied to turf grass or landscape cannot exceed 1/2 pound nitrogen per 1,000 sq. ft. per application.

**Impervious Surfaces (concrete or asphalt) and Mode of Application:** Any fertilizer on any impervious surface must be completely removed or swept/blown back onto the landscape. Fertilizer must be kept out of stormwater drains, ditches, drainage conveyances, roadways or surface waters. Spreader deflector shields are required on broadcast or rotary spreaders; deflector shields must be positioned to deflect fertilizer away from all impervious surfaces and waters.

**Fertilizer Free Zones:** Keep fertilizer 10 feet away from the top of the bank of any surface water, landward edge of a seawall or a designated wetland.



## Pinellas County Fertilizer Ordinance Continued

Management of Vegetative Material (grass clippings, leaves, yard debris, etc.) : Keep all vegetative material out of storm-water drains, ditches, drainage conveyances, surface water or roadways (compost it, bag it or sweep/blow it back on to the yard.)

Redington Beach  
Emergency Request for Special Assistance/Transportation  
(Must be submitted annually)

DATE: \_\_\_\_\_

NAME: \_\_\_\_\_ AGE: \_\_\_\_\_

STREET ADDRESS: \_\_\_\_\_

PHONE: \_\_\_\_\_

HEARING IMPAIRED (Y/N): \_\_\_\_\_

CONTACT PHONE # \_\_\_\_\_ RELATIONSHIP: \_\_\_\_\_

CITIZEN NEED (be specific): \_\_\_\_\_

OXYGEN REQUIRED (Y/N): \_\_\_\_\_ LITERS PER MINUTE: \_\_\_\_\_

DEPENDENT ON LIFE SUPPORT SYSTEM (Y/N): \_\_\_\_\_

CAN WALK w/o ASSISTANCE (Y/N): \_\_\_\_\_ WITH ASSISTANCE: \_\_\_\_\_

REQUIRE A WHEEL CHAIR (Y/N): \_\_\_\_\_ BEDRIDDEN (Y/N): \_\_\_\_\_

Can be moved via wheelchair (Y/N): \_\_\_\_\_ HAS WHEEL CHAIR: \_\_\_\_\_

People to Accompany: \_\_\_\_\_ Relationship: \_\_\_\_\_

Request submitted by: \_\_\_\_\_ Relationship: \_\_\_\_\_

*If you have special needs during a hurricane or storm, make sure you are signed up for the Special Needs Assistance Program. See form above.*

*During an event such as an official storm/hurricane warning, sand will be available across the street from Town Hall, at Friendship Park until supply runs out. At that time, the location will be relocated to Archibald Park, Madeira Beach, across from Subway Sandwiches. Sand bags are available at Town Hall and are limited to 20 per house.*

### *Turtle Season*

*Nesting Season May 1st to August 31st*

*Hatching Season July 1st to October 31st*

This is a friendly reminder that beach front lighting should be turned off during turtle season. It is the code of the Town of Redington Beach to minimize artificial light illuminating areas of the beach. No artificial light source shall illuminate areas where it may deter adult female sea turtles from nesting or disorient hatchlings. Redington Beach has a Sea Turtle Lighting Ordinance, Section 4.9. If you have any questions or concerns about beach front lighting during turtle season, please call 727.391.3875.

**Nesting Tips:** Should you encounter a nesting female, stay far behind so she cannot see you. Do not make any noise, or shine lights. This will frighten her. (no flash photos).

**Hatchling Tips:** If you see a next hatching DO NOT touch the hatchlings or attempt to release them DO NOT expose hatchlings to white light or photographic flashes. Call nesting supervisor at the Clearwater Marine Aquarium at 1.888.239.9414, ext. 224.

**Additional Ways you can Help:** During season, please remove beach furniture nightly. Nesting turtles can become trapped on items left on the beach. Remove trash from the beach (sea turtles will eat plastic bags as they resemble jelly fish.) Volunteer to nest sit during hatching season.

DO NOT disturb or handle sea turtles, eggs, or nest. All are violations of both Federal and State Laws. Sea Turtles, nests, and hatchlings, may only be handled by those with a permit from the Florida Fish & Wildlife Conservation Commission. Sea Turtles are protected under the endangered species Act by Florida State Law. Penalties for interfering with Sea Turtles can be severe.

### Basic Services:

Police: Pinellas County Sheriff  
Non Emergency.....727-582-6200

Fire:Non Emergency..... 727-391-3400

Police & Fire EMERGENCY ONLY: 911

Electric: Progress Energy .....727-443-2641  
Water/Sewer.....727-464-4000  
Brighthouse.....727-329-5020  
Waste Services:.....727-572.6800  
Clearwater Gas:.....727-699-1958

### E-Mail Addresses

[townclerk@townofredingtonbeach.com](mailto:townclerk@townofredingtonbeach.com)

[deputyclerk@townofredingtonbeach.com](mailto:deputyclerk@townofredingtonbeach.com)

[mark.davis@townofredingtonbeach.com](mailto:mark.davis@townofredingtonbeach.com)

If you would like to participate in the Adopt a Street Program, gloves and trash bags will be provided. Drop off locations will be assigned where to leave the removed litter.

### NPDES: NATIONAL POLLUTION DISCHARGE ELIMINATION SYSTEM

#### "ADOPT-A-STREET" Registration Form

Volunteer's Name: \_\_\_\_\_

Address: \_\_\_\_\_

Home Phone: \_\_\_\_\_

Cell Phone: \_\_\_\_\_

E-mail Address: \_\_\_\_\_

**HELP KEEP YOUR COMMUNITY BEAUTIFUL**